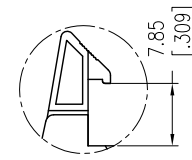
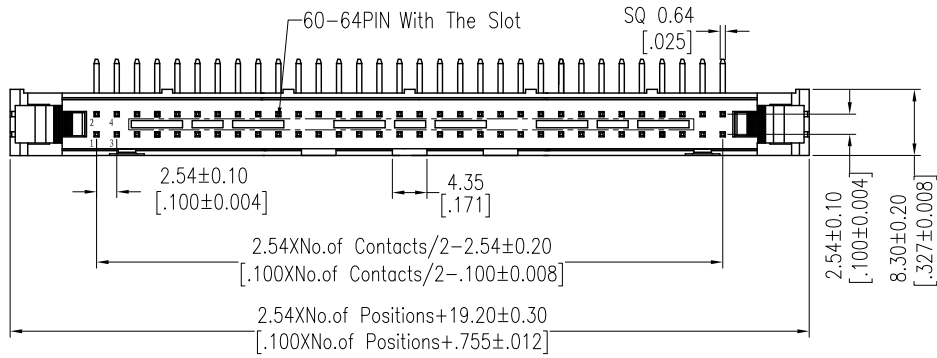


Lat-Con, Series 050, 90° Male Header, different Latch Options

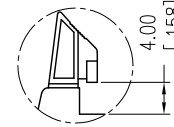


NOTES:
 Current Rating: 3,0 AMP
 Contact Resistance: 20mΩ max.
 Withstand Voltage: 1000V AC/DC
 Insulation Resistance: 1000MΩ min.
 Operation Temperature: -40°C to +105°C

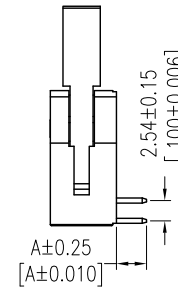
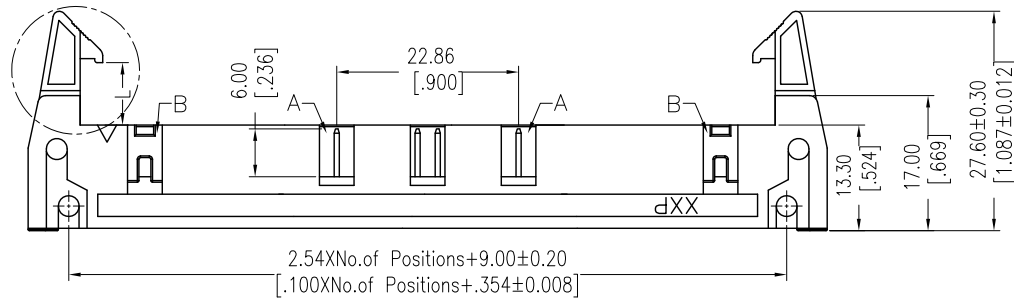
Contact Material: Copper Alloy
 Contact Plating: Au or Sn over Ni
 Insulator Material: PBT (UL94 V-0)



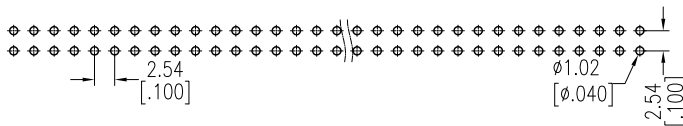
Long Latch



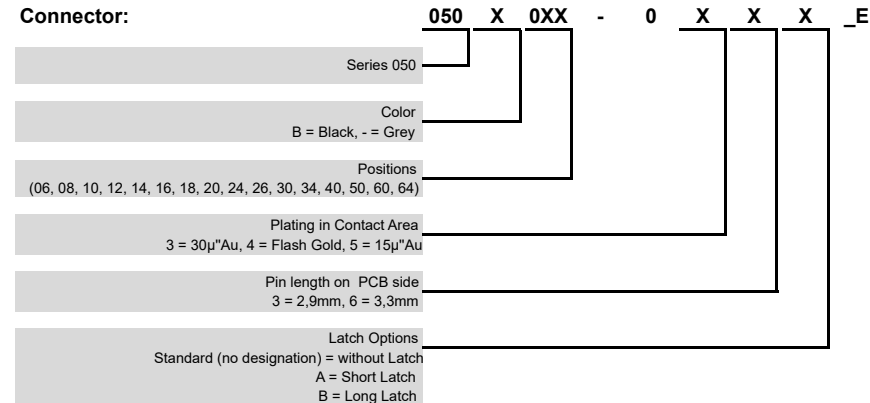
Short Latch



Recommended P.C.B Layout(Top Side)
 (PCB BOARD TOLERANCE±0.05)



Connector:



OPERATION	
X.X	±0.40
X.XX	±0.25
X.XXX	±0.15
Angle	± 3°
DIM	TOL

Positions	Feature A	Feature B
6 - 18		
20 - 58		x
60 - 64	x	x

1	22.04.2021	issued	JAL
REV	DATE	NOTE	NAME